

# Communicate: In Print 2

## Network Installation Guide



Canadian Version

### Contact Us

[www.widgit.com/support](http://www.widgit.com/support)

E: [support@widgit.com](mailto:support@widgit.com)

### Recommended Running Specifications

XP, Vista, Windows 7, Windows 8

Pentium processor (800MHz min, Pentium 4 or above at 1Ghz min preferred)

256Mb RAM min, preferably 512MB or above and Sound Card

1GB hard disk space.

Minimum resolution of 1024x768.

Supports widescreen resolutions.



## Installing Communicate: In Print

This version of Communicate: In Print comes with the Spring 2013 free symbol update. You now have over 12,000 Widgit Symbols. These symbols are stored in special archives. To create wordlist with these new symbols we have also released the new 'Wordlist Manager'. The Wordlist manager and a free trial of SymWriter are available from:

[www.widgit.com/support/wordlistmanager](http://www.widgit.com/support/wordlistmanager)

### Creating an MSI Image

To save time and reduce errors during installation, you can perform an administrative installation of 'Communicate: In Print 2'. This will allow you to create a new installer that saves your registration code and folder settings.

### Folder Information

The installed program will need to know three paths. These are:

- **Shared Resources**  
The 'Communicate Files' folder. This should be installed to the 'Documents/Shared Documents' folder of the 'All Users' profile.
- **Widgit Resources**  
The 'Widresources' folder. This should be installed to the 'Program Files' folder of the local machine.
- **Widgit Pictures**  
The 'Widgit Pictures' folder. This should be installed to the 'Program Files' folder of the local machine.

You can only choose the install location of the Communicate Files Feature during an Administrative Install. This can be installed anywhere on the local machine or on any available network drive. It is recommended that you copy the shared resources (Communicate Files) to a shared location (such as the 'All Users' profile on your network).

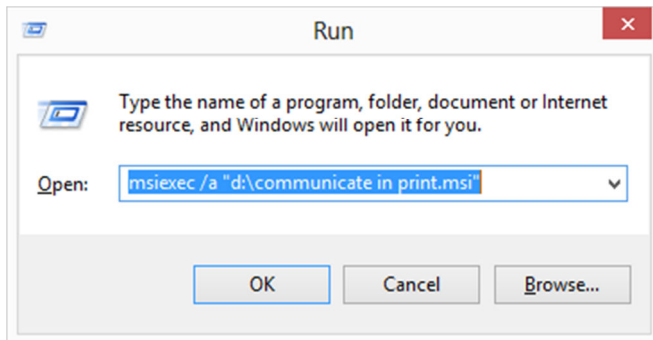
### Using a Folder on the Network

If the 'Shared Resources' (Communicate Files) are going to be stored in a folder on the network, you will not need them to be installed by every client.

Choose a sensible location on the network where students have at least 'read' access and teachers are able to create and edit files (the 'Documents' folder within the 'All Users' profile is the recommended location).

During the Admin install you will have the opportunity to install the 'Communicate Files' feature to the network location immediately, negating the need for it to be part of the Image msi you are creating (So it doesn't get installed each time the image msi is run).

## Instructions for Creating You MSI Image

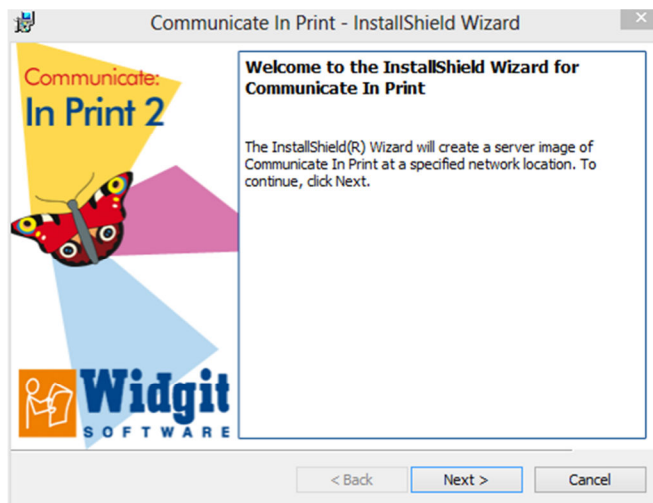


Insert the application CD.

Go to 'Run' and enter:

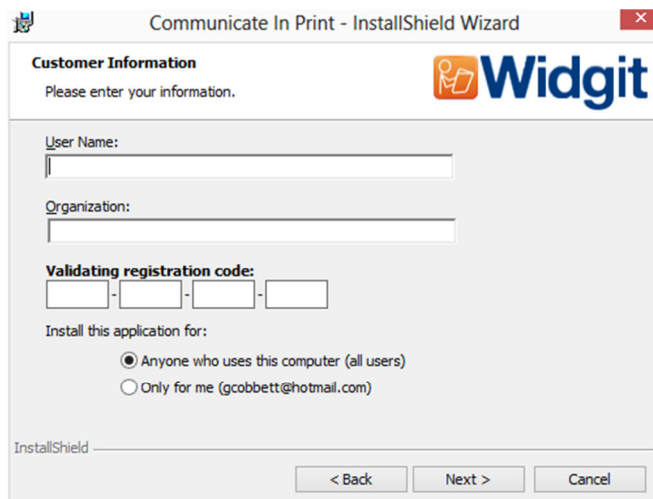
**msiexec /a "d:\communicate in print.msi"**

(If your CD-Rom drive has a different drive letter than D, make sure you type this instead.)



The administrative installation will then begin.

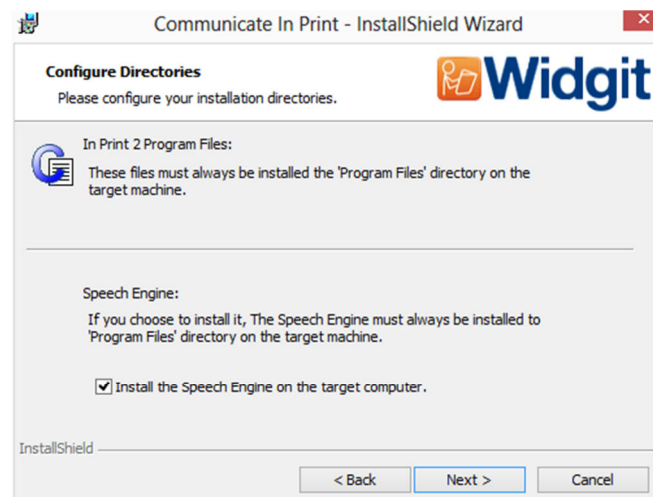
Click '**Next**' on this screen to continue.



Enter your details. Your registration code can be found printed on your licence agreement which is located inside the dvd case.

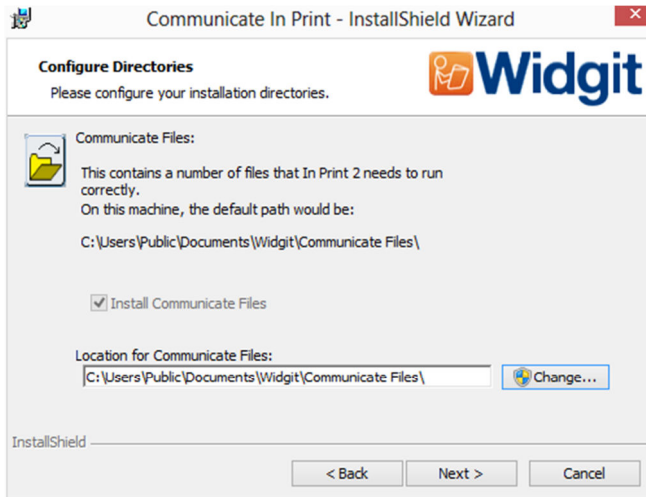
**Note: The registration code must be entered in lower case.**

Click '**Next**' to continue



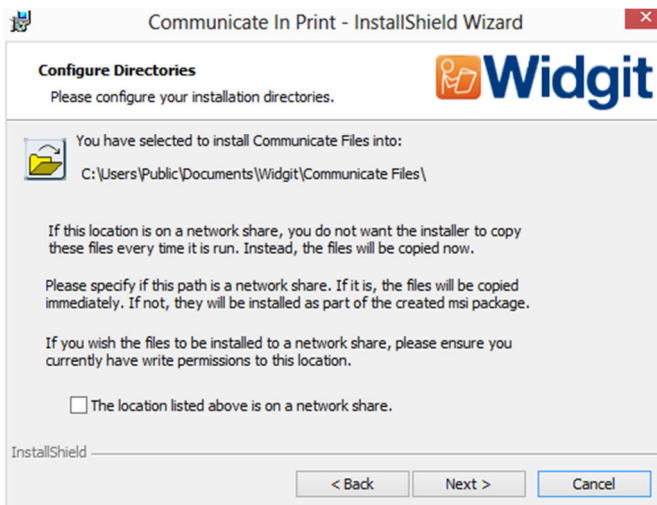
Click '**Next**' to confirm the In Print 2 Program Files and Speech Engine will be installed directly on the target machine.

Remove the tick from the box if you do not wish to install the Speech Engine.

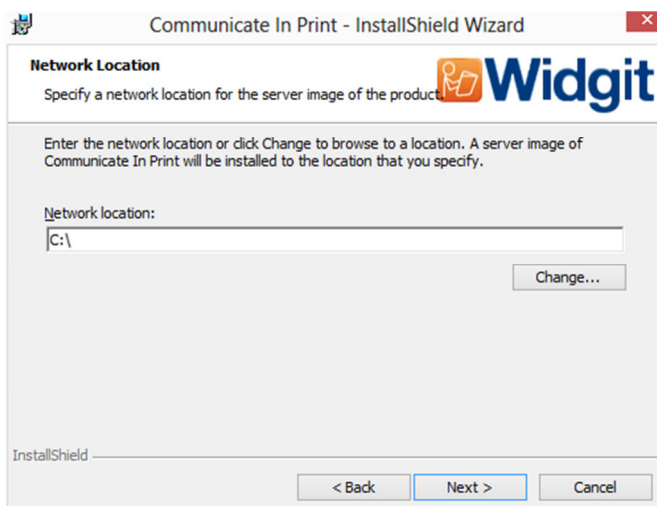


This screen allows you to choose the installation location of the **'Shared Resources'** (Communicate Files). It is recommended that you leave this set to the default path unless you wish to install the files to a network share.

Click the **'Change'** button to enter a default installation path.



If you chose to copy the **'Shared Resources'** (Communicate Files) to a folder on the network (make sure the checkbox is ticked) it will be installed as soon as you click **'Next'** on this screen.



You will then be asked where you would like to create the admin package. Note that if you would like your admin package available on a network location, it can be very slow if you enter a network path here. It will be much faster to create the admin package in the default location and then copy the files manually afterwards.

Click **'Next'** to continue

You have now entered all the required information to create an admin image. On the screen click **'Next'** to continue and begin the creation of the admin image, or click **'back'** to make any changes.

An admin package will be created including an msi and a large number of files. Note that if you want to copy or move these files to another location, you must copy the msi and the additional folders, keeping the relative paths the same, You can then deploy the package to your target machines.