



Communicate: In Print 2 ANZ Version 2.80.630



This new free program update will upgrade an English language version of CIP to the new Australia New Zealand version.

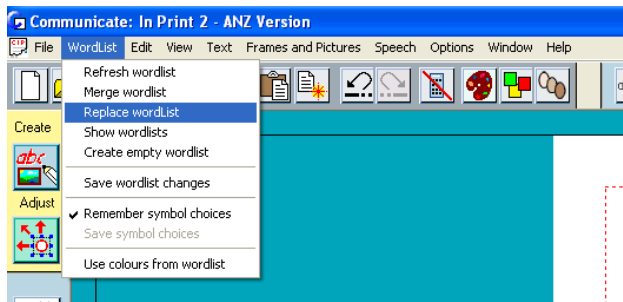
In this version you will get new Australia wordlists and New Zealand wordlists. You will also get the new Australian voices to use with the software. Below are instructions on how to access these new files.

Replacing your Wordlist

After installing the free ANZ update you will have two new wordlists available for use:

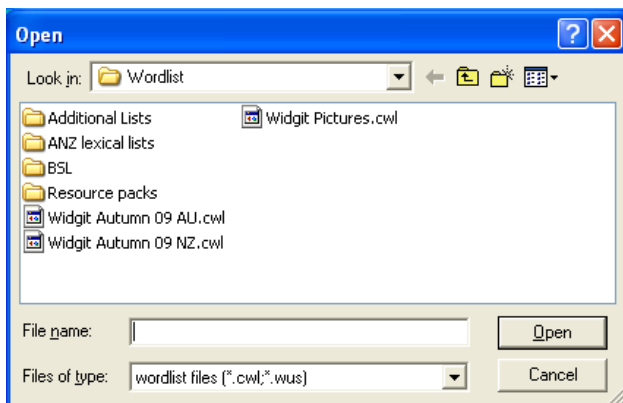
Widgit Autumn 09 AU.cwl
Widgit Autumn 09 NZ.cwl

To replace the current wordlist with either of these wordlists please follow the instructions below.



Open Communicate: In Print 2.

From the **Wordlist** drop down select the **Replace Wordlist** option.



The window below will open and display all wordlists available for use within Communicate: In Print 2.

Double click to select the wordlist you wish to use.

The new wordlist will now be loaded, which will allow you to use the ANZ symbols in your documents.

Setting the Wordlist as default

You can choose to set a Wordlist as default within Communicate: In Print 2, this means whenever you open the program in future your desired wordlist will already be loaded and ready to use.

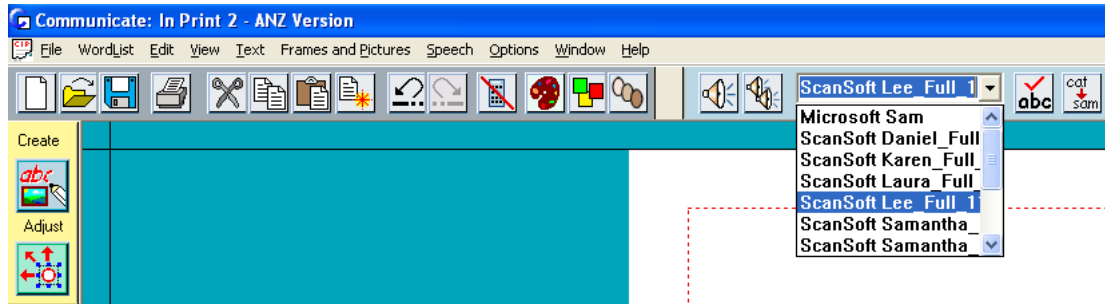
To set the wordlist as default go to **Options -> Start up Preferences**.

Then click the **Browse to change** button in the **Wordlist** tab. Select the wordlist you want as your default and click **OK** to save the changes.

Using the new Australian voices

The free ANZ update will also install two new voices for you to use within Communicate: In Print.

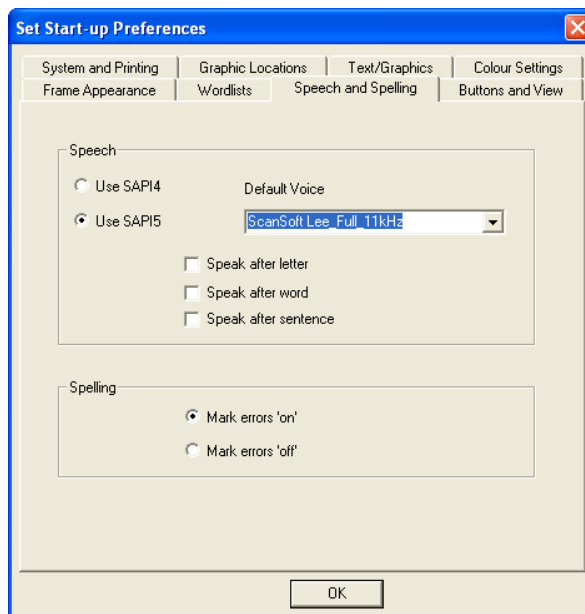
The Australian voices are **Karen** and **Lee**. To use either of these in Communicate: In Print you will need to select them from the drop down list along the top row of the program.



Setting the voice as default

You can choose to set a voice as default within Communicate: In Print 2, this means whenever you open the program in future your desired voice will already be loaded and ready to use.

To set either **Karen** or **Lee** as the default voice, go to **Options -> Start up Preferences**.



Go to the **Speech and Spelling** tab.

From the drop down select the voice you want as your default and click **OK** to save the changes.